

INDUSTRIAL PRODUCTS INDUSTRY

A Complete range of Industrial Fasteners and Industrial Products as per Standard and Customization

www.industrialproductsindustry , Email : industrialproductsindustry@gmail.com, Mobile No.+91 9877737089



Weight & Count Chart of Popular fasteners

M.S. HEX HALF THREAD BOLTS WITH NUTS

MM THREADS AS PER IS 1363/67										
APPROXIMATE WEIGHT IN KGS FOR 100 NOS										
LENGTH	D I A M E T E R									
	M 5	M 6	M 8	M 10	M 12	M 14	M 16	M 18	M 20	M 22
16 mm	0.448	0.743	1.590	3.211						
20 mm	0.598	0.812	1.711	3.411	4.892					
25 mm	0.660	0.897	1.871	3.660	5.252	8.170				
30 mm	0.737	1.010	2.070	3.912	5.574	9.690	10.707			18.657
35 mm	0.804	1.120	2.271	4.223	5.974	10.000	11.416	16.026		19.608
40 mm	0.881	1.230	2.470	4.533	6.410	10.288	12.107	16.667	20.747	
45 mm	0.958	1.340	2.671	4.840	6.859	10.504	12.821	17.241	21.739	
50 mm	1.030	1.450	2.870	5.155	7.299	11.261	13.624	17.857	22.727	28.409
55 mm		1.560	3.071	5.464	7.740	11.628	14.409	18.868	23.810	30.120
60 mm		1.670	3.270	5.774	8.183	12.255	15.244	20.000	25.126	32.051
65 mm		1.781	3.472	6.083	8.621	12.626	16.026	21.008	26.455	34.014
70 mm		1.890	3.671	6.394	9.058	12.987	16.835	22.124	27.778	35.461
75 mm		2.000	3.873	6.702	9.506	13.228	17.606	23.256	29.070	39.063
80 mm		2.111	4.072	7.013	10.000	13.889	18.248	24.510	30.303	40.000
90 mm			4.472	7.634	10.917	14.925	19.841	26.042	33.113	41.667
100 mm			4.873	8.251	11.820	16.340	21.459	27.778	35.714	46.296
110 mm				8.881	12.723	17.730	23.041	31.250	38.168	47.170
120 mm				9.506	13.624	18.797	24.631	32.895	40.984	50.000
130 mm				10.101	14.535	20.000	26.316	34.722	43.478	52.632
140 mm				10.707	15.432	20.833	27.933	35.461	46.296	55.556
150 mm				11.312	16.340	22.222	29.412	37.594	48.544	58.824
160 mm				11.905	17.241	24.272	31.056	40.984	50.505	61.728
170 mm				12.500	18.116		32.680		53.191	64.935
180 mm				13.123	19.011	26.882	34.247		55.566	67.568
190 mm				13.736	19.920		35.971		58.140	70.423
200 mm				14.327	20.833	29.586	37.594	49.020	60.976	73.529
220 mm				15.528	22.624		40.650		65.789	79.365
240 mm				16.722	24.510		43.860		71.429	84.746
250 mm				17.301	25.381		45.455		74.627	87.719
260 mm				17.921	26.316		47.170		76.923	90.909
280 mm				19.157	28.090		50.505		81.967	98.039
300 mm				20.325	29.940		53.763		87.719	104.167
320 mm					31.646		56.818		92.593	
340 mm					33.557		60.241		98.039	
360 mm					35.211		63.291		104.167	
380 mm					37.037		66.667		108.696	
400 mm					39.063		69.444		113.636	



MM THREADS AS PER IS 1363/67 CONTD														
APPROXIMATE WEIGHT IN KGS FOR 100 NOS														
LENGTH	D I A M E T E R													
	M 24	M 27	M 30	M 33	M 36	M 39	M 42	M 45	M 48	M 52	M 56	M 60	M 64	M 72
60 mm	42.373	57.471	70.423											
65 mm	43.860	59.524	75.758											
70 mm	45.455	60.976	81.967											
75 mm	47.170	63.291	84.746											
80 mm	49.020	65.789	87.719	108.696	135.135									
90 mm	52.632	70.423	94.340	116.279	142.857									
100 mm	56.180	74.627	100.000	125.000	156.250	192.308	217.391							
110 mm	60.241	79.365	104.167	131.579	166.667	200.000	238.095							
120 mm	63.291	83.333	108.696	135.135	172.414	208.333	250.000	312.500						
130 mm	66.667	87.719	113.636	142.857	178.571	217.391	263.158		357.143					
140 mm	69.444	92.593	119.048	151.515	185.185	227.273	277.778		384.615					
150 mm	73.529	98.039	125.000	156.250	192.308	238.095	294.118	333.333						
160 mm	76.923	102.041	131.579	166.667	200.000	250.000	294.118		416.667			714.286		
170 mm	80.645	106.383	138.889	172.414	208.333	263.158	312.500			500.000	625.000		833.333	
180 mm	83.333	111.111	142.857	178.571	217.391	263.158	312.500	357.143	454.545					
190 mm	87.719	116.279	147.059	185.185	227.273	277.778	333.333							
200 mm	90.909	119.048	151.515	192.308	238.095	294.118	333.333	384.615		555.556				
220 mm	98.039	128.205	166.667	208.333	250.000	312.500	357.143		500.000		714.286	833.333		1,250.000
240 mm	106.383	138.889	178.571	217.391	277.778	333.333	384.615	416.667		625.000			1,000.000	
250 mm	111.111	142.857	185.185	227.273	294.118	333.333	384.615		555.556					
260 mm	113.636	147.059	185.185	227.273	312.500	357.143	416.667							
280 mm	119.048	156.250	200.000	250.000	312.500	357.143	416.667	454.545			833.333	1,000.000		
300 mm	128.205	166.667	208.333	263.158	333.333	384.615	454.545		625.000	714.286			1,250.000	1,666.667
320 mm	135.135	178.571	217.391	277.778										
340 mm	142.857	185.185	238.095	294.118										
360 mm	147.059	192.308	250.000	294.118										
380 mm	156.250	200.000	250.000	312.500										
400 mm	161.290	217.391	263.158	333.333										

BSW THREADS AS PER BS 916/53														
APPROXIMATE WEIGHT IN KGS FOR 100 NOS														
LENGTH	D I A M E T E R													
	1/4"	5/16"	3/8"	7/16"	1/2"	5/8"	3/4"	7/8"	1"	1.1/8"	1.1/4"	1.1/2"	1.3/4"	2"
3/4"	1.111													
1"	1.252	2.041	3.123	4.950										
1.1/4"	1.401	2.281	3.458	5.388	7.692	13.966								
1.1/2"	1.556	2.523	3.797	5.875	8.306	14.925	23.810	29.240						
1.3/4"	1.705	2.762	4.132	6.329	8.897	15.924	25.253	31.056	45.045					
2"	1.864	3.003	4.468	6.793	9.506	16.949	26.882	32.680	47.619					
2.1/4"	2.005	3.245	4.826	7.246	10.121	17.921	28.249	34.483	50.505	70.423				
2.1/2"	2.159	3.484	5.144	7.704	10.707	18.868	29.762	36.765	52.632	73.529	98.039	156.250	227.273	312.500
3"	2.459	3.965	5.814	8.621	11.933	20.921	32.468	40.323	56.818	79.365	106.383	166.667	250.000	333.333
3.1/2"	2.762	4.444	6.485	9.542	13.123	22.831	35.714	43.860	60.976	84.746	113.636	178.571	250.000	333.333
4"	3.075	4.926	7.153	10.460	14.327	24.876	38.462	48.544	66.667	90.909	119.048	185.185	277.778	357.143
4.1/2"	3.367	5.405	7.813	11.364	15.528	26.882	40.984	51.546	69.444	98.039	128.205	192.308	277.778	384.615
5"	3.655	5.903	8.475	12.285	16.779	28.902	43.860	54.945	76.923	102.041	135.135	208.333	294.118	384.615

Fastener Weight & Count Chart

4"	1.087	2.232	3.526	5.382	7.740	10.438	17.182	26.455	35.714	49.505	67.568	84.746	135.135	250.000
4.1/2"		2.468	3.894	5.938	8.489	11.416	18.727	28.902	39.370	53.191	72.464	90.909		
5"		2.700	4.259	6.485	9.242	12.407	20.325	31.250	43.103	57.471	78.125	98.039	156.250	294.118
6"		3.165	4.995	7.599	10.730	14.409	23.364	35.714	49.505	65.789	89.286	113.636	172.414	333.333
7"				8.850		16.667	26.596	40.000	56.180	73.529		128.205		
8"				9.901		18.657	29.412	45.045	62.500	81.967		142.857	217.391	416.667
9"				11.111		20.408	32.468	49.505	68.493	89.286		151.515		
10"				12.048		22.422	36.232	53.763	74.627	98.039		161.290		500.000
11"						24.272	39.370	58.824	79.365	106.383		178.571		
12"						26.455	42.735	64.935	84.746	113.636		192.308		

ROUND HEAD RIVETS

APPROXIMATE WEIGHT IN KGS FOR 100 NOS

LENGTH	D I A M E T E R									
	1/4"	5/16"	3/8"	7/16"	1/2"	5/8"	3/4"	7/8"	1"	
1/2"	0.570	0.961	1.555							
5/8"	0.661	1.079	1.747							
3/4"	0.727	1.228	1.933	2.841	3.623					
7/8"	0.800	1.323	2.096	3.064	3.779	6.305				
1"	0.866	1.437	2.232	3.324	4.078	6.993	11.236			
1.1/4"	1.034	1.680	2.587	3.837	4.677	7.949	12.821	18.116		
1.3/8"	1.103	1.801	2.789	4.065	5.040	8.757	13.369	18.939		
1.1/2"	1.180	1.939	3.025	4.322	5.274	9.009	13.928	19.841	25.773	
1.5/8"			3.163	4.496	5.669	9.452	14.663	20.833	27.174	
1.3/4"			3.316	4.686	5.945	10.183	15.480	21.834	28.090	
1.7/8"			3.494	4.941	6.305	10.417	16.234	22.727	29.240	
2"			3.693	5.225	6.711	10.753	16.779	23.474	30.675	
2.1/8"					6.935	11.186	17.182	24.390	31.847	
2.1/4"					7.564	11.962	17.921	25.641	32.895	
2.3/8"					7.752	12.315	18.587	26.738	34.247	
2.1/2"					7.862	12.788	19.305	27.473	34.965	
2.5/8"					8.197	13.405	19.920	28.249	35.971	
2.3/4"					8.361	13.661	20.576	29.070	37.313	
2.7/8"					8.772	14.368	21.186	30.303	38.462	
3"					9.025	14.663	21.930	31.646	39.683	
3.1/8"							22.831	32.468	40.984	
3.1/4"							23.585	33.333	42.373	
3.3/8"							24.272	34.483	43.478	
3.1/2"							24.876	35.211	44.643	
3.3/4"								37.037	47.170	
4"								38.760	50.000	



M.S. SQUARE HEAD SET SCREWS - SHALLOW SMALL SQUARE HEAD - BSW

APPROXIMATE WEIGHT IN KGS FOR 100 NOS

LENGTH	D I A M E T E R				
	1/4"	5/16"	3/8"	7/16"	1/2"
1/2"	0.485	0.800	1.253		
3/4"	0.602	0.986	1.529	2.451	3.086
1"	0.718	1.174	1.805	2.632	3.584
1.1/4"	0.843	1.362	2.008	3.003	4.065
1.1/2"	0.948	1.548	2.347	3.367	4.566
2"	1.179	1.923	2.907	4.115	5.556
2.1/2"	1.408	2.299	3.460	4.878	6.536



M.S. ROUND HEAD SQUARE NECK CARRIAGE BOLTS WITH SQUARE NUTS

APPROXIMATE WEIGHT IN KGS FOR 100 NOS

LENGTH	D I A M E T E R				
	1/4"	5/16"	3/8"	7/16"	1/2"
1"	1.070	1.859	2.844	4.322	6.165
1.1/4"	1.243	2.050	3.125	4.708	6.667
1.1/2"	1.397	2.335	3.492	5.102	7.163
1.3/4"	1.551	2.581	3.846	5.631	7.776
2"	1.706	2.825	4.198	6.112	8.432
2.1/4"	1.864	3.071	4.554	6.588	9.058
2.1/2"	2.023	3.316	4.907	7.072	9.671
2.3/4"	2.182	3.561	5.258	7.564	10.309
3"	2.340	3.805	5.612	8.039	10.941
3.1/2"	2.653	4.296	6.274	8.993	12.225
4"	2.971	4.785	7.022	9.960	13.477
4.1/2"	3.287	5.274	7.728	10.917	14.706
5"	3.605	5.767	8.446	11.905	15.974
5.1/2"	3.922	6.258	9.158	12.853	17.241
6"	4.241	6.748	9.862	13.812	18.519
7"				15.674	20.921
8"				17.606	23.364



Fastener Weight & Count Chart

HIGH STRENGTH STRUCTURAL BOLTS (ONLY) AS PER IS 3757

APPROXIMATE WEIGHT IN KGS FOR 100NOS

LENGTH	DIAMETER						
	M16	M20	M22	M24	M27	M30	M36
40	10.28						
45	11.07	180.30					
50	11.86	19.25	25.20				
55	12.65	20.50	26.69	33.74			
60	13.44	21.73	28.18	35.22	48.09		
65	14.23	22.96	29.67	37.29	50.34		
70	15.02	24.19	31.16	39.07	52.58	67.25	
75	15.81	25.43	32.66	40.84	54.83	70.03	108.91
80	16.60	26.66	34.15	42.62	57.08	72.80	112.90
85	17.39	27.89	35.64	44.39	59.33	75.58	116.90
90	18.17	29.13	37.13	46.17	61.57	78.35	120.89
95	18.96	30.36	38.62	47.94	63.82	81.13	124.89
100	19.75	31.59	40.12	49.72	66.07	83.90	128.88
110	21.14	33.77	42.78	52.85	68.56	88.84	136.20
120	22.72	36.24	45.77	56.41	73.06	94.39	144.19
130	24.30	38.70	48.75	59.96	77.55	99.94	152.18
140	25.88	41.17	51.73	63.51	82.05	105.49	160.17
150	27.46	43.93	54.72	67.06	86.54	111.04	168.16
160	29.03	46.10	57.70	70.61	91.04	116.59	176.15
170	30.61	48.57	60.69	74.16	95.53	122.14	184.14
180	32.19	51.03	63.67	77.71	100.03	127.69	192.13
190	33.77	53.50	66.65	81.26	104.52	133.24	200.12
200	35.35	55.96	69.44	84.82	109.02	138.79	208.11
210					113.52	144.34	216.10
220					118.01	149.89	224.09
230					122.51	155.44	232.08
240					127.00	160.99	240.07
250					131.50	166.54	248.06
260					135.99	172.09	256.05
270					140.49	177.64	264.04
280					144.98	183.19	272.03
290					149.48	188.74	280.02
300					153.97	194.29	288.01



FULLY THREADED RODS

Approximate weight in Kgs per metre per pc.

Size (MM)	Weight per Metre	Size (UNC)	Weight per Mtr
M2	0.0187		
M2.5	0.030		
M3	0.044		
M3.5	0.060		
M4	0.078		
M5	0.124		
M6	0.177	1/4"	0.194
M8	0.319	5/16"	0.323
M10	0.500	3/8"	0.469
		7/16"	0.650
M12	0.725	1/2"	0.896
M14	0.970	9/16"	1.096
M16	1.330	5/8"	1.342
M18	1.650		
M20	2.080	3/4"	2.021
M22	2.540	7/8"	2.756
M24	3.000	1"	3.638
M27	3.850	1 1/8"	4.545
M30	4.750	1 1/4"	5.718
M33	5.900	1 3/8"	6.842
M36	6.900	1 1/2"	8.281
M39	8.200	1 5/8"	9.726
M42	9.400	1 3/4"	11.231
M45	11.000	1 7/8"	13.038
M48	12.400	2"	14.741



FULLY THREADED UNC (ASTM) STUDS

APPROXIMATE WEIGHT IN KGS PER NO.

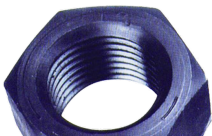
LENGTH	D I A M E T E R												
	1/2"	5/8"	3/4"	7/8"	1"	1.1/8"	1.1/4"	1.3/8"	1.1/2"	1.5/8"	1.3/4"	1.7/8"	2"
50 mm	0.044	0.069	0.100	0.136	0.178	0.225	0.296	0.356	0.422	0.493	0.570	0.681	0.771
55 mm	0.049	0.076	0.110	0.150	0.195	0.247	0.326	0.392	0.464	0.543	0.627	0.749	0.848
60 mm	0.053	0.083	0.120	0.163	0.213	0.270	0.355	0.428	0.506	0.592	0.684	0.817	0.925
65 mm	0.058	0.090	0.130	0.177	0.231	0.292	0.385	0.463	0.549	0.641	0.741	0.885	1.002
70 mm	0.062	0.097	0.140	0.190	0.249	0.315	0.415	0.499	0.591	0.690	0.798	0.953	1.079
75 mm	0.067	0.104	0.150	0.204	0.266	0.337	0.444	0.535	0.633	0.740	0.855	1.021	1.156
80 mm	0.071	0.111	0.160	0.218	0.284	0.360	0.474	0.570	0.675	0.789	0.912	1.089	1.233
85 mm	0.075	0.118	0.170	0.231	0.302	0.382	0.504	0.606	0.717	0.838	0.969	1.158	1.310
90 mm	0.080	0.125	0.180	0.245	0.320	0.404	0.533	0.641	0.760	0.888	1.026	1.226	1.387
95 mm	0.084	0.132	0.190	0.258	0.337	0.427	0.563	0.677	0.802	0.937	1.083	1.294	1.464
100 mm	0.089	0.139	0.200	0.272	0.355	0.449	0.592	0.713	0.844	0.986	1.140	1.362	1.541
110 mm	0.098	0.153	0.220	0.299	0.391	0.494	0.652	0.784	0.928	1.085	1.254	1.498	1.695
120 mm	0.107	0.166	0.240	0.326	0.426	0.539	0.711	0.855	1.013	1.184	1.388	1.634	1.850
125 mm	0.111	0.173	0.250	0.340	0.444	0.562	0.741	0.891	1.055	1.233	1.425	1.702	1.927
130 mm	0.115	0.180	0.260	0.353	0.462	0.584	0.770	0.926	1.097	1.282	1.482	1.770	2.004
140 mm	0.124	0.194	0.280	0.381	0.497	0.628	0.829	0.998	1.182	1.381	1.596	1.907	2.158
150 mm	0.133	0.208	0.300	0.408	0.533	0.674	0.889	1.069	1.266	1.480	1.710	2.043	2.312
160 mm	0.142	0.222	0.320	0.435	0.568	0.719	0.948	1.140	1.350	1.578	1.824	2.179	2.466
170 mm	0.151	0.236	0.340	0.462	0.604	0.764	1.007	1.212	1.435	1.677	1.938	2.315	2.620
175 mm	0.155	0.243	0.350	0.476	0.621	0.786	1.037	1.247	1.477	1.726	1.995	2.383	2.697
180 mm	0.160	0.250	0.360	0.489	0.639	0.809	1.066	1.283	1.519	1.776	2.052	2.451	2.774
190 mm	0.169	0.264	0.380	0.517	0.675	0.854	1.126	1.354	1.604	1.874	2.166	2.588	2.928
200 mm	0.178	0.277	0.399	0.544	0.710	0.899	1.185	1.425	1.688	1.973	2.280	2.724	3.083

Fastener Weight & Count Chart

210 mm	0.186	0.291	0.419	0.571	0.746	0.944	1.244	1.497	1.772	2.071	2.394	2.860	3.237
220 mm	0.195	0.305	0.439	0.596	0.781	0.989	1.303	1.568	1.857	2.170	2.508	2.996	3.391
225 mm	0.200	0.312	0.449	0.612	0.799	1.011	1.333	1.604	1.899	2.219	2.565	3.064	3.468
230 mm	0.204	0.319	0.459	0.625	0.817	1.034	1.363	1.639	1.941	2.269	2.622	3.132	3.545
240 mm	0.213	0.333	0.479	0.653	0.852	1.079	1.422	1.710	2.026	2.367	2.736	3.268	3.699
250 mm	0.222	0.347	0.499	0.680	0.888	1.124	1.481	1.782	2.110	2.466	2.850	3.405	3.853
260 mm	0.231	0.361	0.519	0.707	0.923	1.169	1.540	1.853	2.194	2.565	2.964	3.541	4.007
270 mm	0.240	0.375	0.539	0.734	0.959	1.213	1.600	1.924	2.279	2.663	3.078	3.677	4.161
275 mm	0.244	0.382	0.549	0.748	0.977	1.236	1.629	1.960	2.321	2.713	3.135	3.745	4.238
280 mm	0.249	0.388	0.559	0.761	0.994	1.258	1.659	1.995	2.363	2.762	3.192	3.813	4.316
290 mm	0.257	0.402	0.579	0.788	1.030	1.303	1.718	2.067	2.448	2.861	3.306	3.949	4.470
300 mm	0.266	0.416	0.599	0.816	1.065	1.348	1.777	2.138	2.532	2.959	3.420	4.086	4.624



NUTS													
APPROX. WEIGHT IN KGS FOR													
100 NOS.													
SIZE	OLD SPEC IS 1363/67	NEW SPEC IS 1363/92	HEIGHT = DIA NUTS	HEX LOCK NUTS IS 1364-84	HSS NUTS IS: 6623	Castle Nuts IS 2232-67	Nylock Nuts Din 985	SIZE	HEX NUTS BSW / BSF	HEX LOCK NUTS BSW / BSF	SQUARE NUTS - BSW	ASTM A-194 UNC HEAVY HEX NUTS	
M2	0.011							1/8"	0.041				
M3	0.033						0.050	5/32"	0.053				
M4	0.067					0.112	0.100	3/16"	0.133				
M5	0.111			0.080		0.230	0.140	1/4"	0.323	0.190	0.340		
M6	0.232			0.120		0.316	0.240	5/16"	0.510	0.340	0.654	0.758	
M7	0.294					0.396	0.300	3/8"	0.817	0.510	0.966	1.370	
M8	0.482			0.300		0.735	0.510	7/16"	1.389	0.930	1.683	2.000	
M10	1.020	0.909	1.282	0.670		1.580	1.060	1/2"	2.222	1.430	2.677	2.959	
M12	1.590	1.389	1.942	1.090		2.000	1.720	5/8"	4.348	2.700	5.040	5.263	
M14	2.400		3.049	1.680		2.700	2.600	3/4"	7.184	4.800	8.818	8.621	
M16	3.081	3.333	3.906	1.800	6.040	3.890	3.400	7/8"	8.621	5.600	10.917	12.658	
M18	4.448		5.814	2.690		5.750	4.500	1"	12.987	8.500	15.432	17.986	
M20	6.031	6.667	7.519	3.300	11.530	7.520	6.500	1.1/8"	18.182	11.800	23.364	26.316	
M22	7.143	8.929	9.091	3.890	14.280	9.300	7.500	1.1/4"	26.596	17.200	33.333	34.247	
M24	10.309	12.500	12.821	5.100	19.770	13.100	10.000	1.3/8"	37.879	23.000		44.248	
M27	15.432		18.657	8.150	28.230	19.200	16.200	1.1/2"	45.455	28.000		60.241	
M30	21.645		26.596	10.400	36.500	26.400	21.200	1.5/8"	71.429			73.529	
M33	27.174		34.483	14.300		33.330	31.700	1.3/4"	71.429	46.000		90.909	
M36	37.037		43.860	17.600	28.180	44.700	41.500	2"	81.967	54.000		135.135	
M39	47.619		57.471	24.000		58.400	49.900	2.1/4"	111.111			185.185	
M42	57.471		73.529	27.500		71.000	62.800	2.1/2"	172.414			238.095	
M45	72.464		92.593	37.000		86.000	77.100	2.3/4"	263.158			333.333	
M48	92.593		113.636	42.800		106.000	99.800	3"	333.333			454.545	
M52	108.696		138.889	52.000		130.000		0 BA	0.270				
M56	131.579		166.667					2 BA	0.126				
M60	161.290		192.308										
M64	185.185		227.273										
M72	250.000		312.500										
M80	333.333												



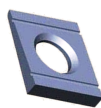
Fastener Weight & Count Chart

M90	454.545																			
M100	625.000																			

WASHERS

APPROX. WEIGHT IN KGS FOR 100 NOS

SIZE	PLAIN PUNCHED WASHER IS:2016	HEAVY WASHER IS:6610	MACHINED WASHER IS:2016	SQUARE TAPER WASHERS				SPRING WASHER FLAT SECTION IS:3063-72	SPRING SQUARE SECTION IS:6735-72 DIN : 7980	Size (Inches)	PLAIN PUNCHED WASHER BS:3410 TABLE 7	SPRING WASHER FLAT SECTION BS:1802-1951	SPRING WASHER SQUARE SECTION BS:1802-1951
				MACHINED		HIGH STRENGTH FRICTION GRIP							
				FOR CHANNELS IS:5372-75	FOR I-BEAM IS:5374-75	TYPE-B (CHANNELS) IS : 6649-85	TYPE-C (I-BEAMS) IS : 6649-85						
M-3								0.01	0.01				
M-4								0.02	0.02				
M-5	0.04		0.04					0.03	0.03				
M-6	0.11		0.11					0.08	0.04	1/4"	0.21		
M-8	0.20		0.21	1.10	1.20			0.16	0.11	5/16"	0.35		
M-10	0.39	1.60	0.40	1.00	1.10			0.25	0.20	3/8"	0.48		
M-12	0.58	1.90	0.62	2.00	2.20	2.00	1.80	0.38	0.23	1/2"	1.07		
M-14	0.82							0.60	0.38				
M-16	1.06	2.90	1.13	3.40	3.75	9.00	8.50	0.89	0.59	5/8"	1.85		
M-18	1.27							0.97	0.66				
M-20	1.64	4.40	1.72	5.80	6.70	8.50	8.00	1.52	1.23	3/4"	2.91		
M-22	1.75					7.50	7.00	1.65	1.36	7/8"	4.27		
M-24	3.11	6.30	3.30	13.50	16.00	6.50	6.00	2.62	1.81	1"	6.13		
M-27	3.94	8.00	4.23	12.50	15.00	12.00	11.50	2.87	2.06	1.1/8"	7.69		
M-30	5.05	10.10	5.36	16.50	18.70	17.50	16.00	4.43	3.20	1.1/4"	9.90		
M-33	7.10	12.00	7.54	21.00	23.50	23.00	22.50	6.30	3.50				
M-36	8.73	14.60	9.20	25.50	29.20	26.50	26.00	6.73	5.25	1.1/2"	17.24		
M-39	12.60	16.70	13.30	28.30	34.50			7.17	5.61				
M-42	17.50	20.10	18.30					11.10	8.00				
M-45	21.20	22.20	22.00					11.70	8.53				
M-48	28.40	26.00	29.40					12.30	9.00	2"	27.78		
M-52	31.90		33.00					18.20					
M-56	47.90							19.30					
M-60	51.60							20.30					
M-64	55.40							21.80					
M-68	57.40												
M-72	63.40							24.00					



MACHINE SCREWS

MACHINE SCREWS CHEESE HEAD AS PER IS 1366-2002

APPROXIMATE WEIGHT IN KGS FOR 100 NOS

DIA \ LENGTH	2	3	4	5	6	8	10	12	14	16	20	25	30	35	40	45	50	55	60	65	70	80	90	100
M1.6	0.007	0.008	0.009	0.010	0.011	0.014	0.016	0.018	0.020	0.023														
M2		0.016	0.017	0.019	0.021	0.025	0.029	0.032	0.036	0.040	0.047													
M2.5		0.027	0.030	0.033	0.036	0.042	0.048	0.054	0.060	0.066	0.078													
M3					0.060	0.069	0.078	0.087	0.096	0.104	0.122	0.144	0.166	0.188	0.210	0.232	0.254	0.276	0.298					
M4					0.111	0.126	0.141	0.157	0.172	0.188	0.219	0.258	0.296	0.349	0.380	0.417	0.457	0.471	0.490		0.566	0.642	0.718	
M5					0.206	0.220	0.255	0.280	0.305	0.330	0.378	0.440	0.502	0.562	0.625	0.688	0.750	0.810	0.875		1.000	1.130	1.255	1.380
M6						0.356	0.392	0.427	0.462	0.498	0.569	0.656	0.745	0.825	0.920	1.000	1.090	1.170	1.260		1.430	1.600	1.770	1.940
M8							0.785	0.849	0.913	0.977	1.100	1.260	1.420	1.580	1.740	1.890	2.060	2.210	2.390		2.700	3.010	3.330	3.650
M10								1.460	1.560	1.660	1.860	2.110	2.360	2.610	2.860	3.110	3.360	3.610	3.860	4.130	4.400	4.860	5.350	5.850



MACHINE SCREWS CSK HEAD AS PER IS 1365-2005

APPROXIMATE WEIGHT IN KGS FOR 100 NOS

DIA \ LENGTH	2	3	4	5	6	8	10	12	14	16	20	25	30	35	40	45	50	55	60	70	80	90	100	
M1.6	0.004	0.005	0.006	0.008	0.009	0.011	0.013																	
M2		0.010	0.011	0.013	0.015	0.019	0.023	0.026	0.030	0.034	0.042													
M2.5		0.017	0.020	0.023	0.026	0.032	0.038	0.044	0.050	0.056	0.068	0.083	0.098											
M3					0.037	0.047	0.056	0.065	0.078	0.089	0.100	0.122	0.145	0.166	0.188	0.210	0.232	0.254	0.276					
M4						0.094	0.110	0.125	0.141	0.150	0.187	0.226	0.264	0.301	0.338	0.376	0.414	0.452	0.490	0.566	0.642	0.718		
M5							0.183	0.208	0.246	0.260	0.307	0.370	0.431	0.493	0.555	0.617	0.680	0.743	0.806	0.932	1.058	1.185	1.310	
M6							0.274	0.308	0.370	0.405	0.450	0.538	0.626	0.715	0.801	0.886	0.970	1.075	1.152	1.330	1.504	1.680	1.856	
M8								0.611	0.686	0.790	0.865	1.020	1.180	1.340	1.500	1.650	1.810	1.970	2.135	2.400	2.740	3.060	3.380	
M10										1.350	1.450	1.700	1.950	2.200	2.450	2.700	2.950	3.200	3.450	3.800	4.390	4.900	5.410	
M12											2.180	2.550	2.920	3.280	3.650	4.010	4.380	4.750	5.110	5.840	6.570	7.820	9.100	
M16												4.540	5.210	5.870	6.540	7.200	7.870	8.530	9.190	10.500	11.800	13.100	14.500	
M20													8.160	9.260	10.300	11.400	12.500	13.600	14.700	16.900	19.100			



MACHINE SCREWS CSK HEAD AS PER BS 450

APPROXIMATE WEIGHT IN KGS FOR 100 NOS

DIA \ LENGTH	1/4"	3/8"	1/2"	5/8"	3/4"	1"	1 1/4"	1 1/2"	1 3/4"	2"	2 1/2"	3"	3 1/2"	4"	5"	6"
1/8"								0.173								
5/32"																
3/16"			0.150		0.229	0.280	0.344	0.400	0.464	0.500	0.624	0.750	0.875	1.000	1.250	1.500
1/4"			0.288		0.438	0.563	0.725	0.800		1.025	1.300	1.400	1.700			
5/16"			0.600		0.700	0.925	1.058	1.250		1.725	2.025	2.325	2.650	3.072		
3/8"					1.100	1.400	1.700	1.960		2.400	3.000	3.400	3.950	4.600		
1/2"						2.575	3.050	3.600		4.600	5.600	6.400		8.200	10.661	11.310
5/8"														14.500		
3/4"																

Contact Us

Tel: +91 9877737089

+91 9888074426

Mobile:

Email: industrialproductsindustry@gmail.com
sales@industrialproductsindustry.com

Address: Regd Office :
1706/124, Street No.3
Preet Nagar, New Shimlapuri
Ludhiana-141003, Punjab, India
Works:
Jaspal Banger, Near Satyam Kanda
Ludhiana-141010, Punjab, India
Important note and disclaimer

This website is under continuous improvement and upgradation. The technical details in some of these pages are obtained from past experiences, brochures provided by manufacturers and from what is available in the public domain. Their accuracy has not been verified. These are being presented here for guidance only. Viewers are advised to confirm the details before committing to them. No responsibility will lie with us for any error or discrepancy in the technical or other data provided.

Search...

QUICK LINKS

- Self Tapping Screws**
- Machine Screws**
- Dry Wall & Self Drilling Screws**
- Socket Head Products**
- High Tensile Fasteners**
- Expansion (Anchor) Fasteners**
- Stainless Steel Fasteners**
- Brass Fasteners**
- Mild Steel Bolts, Nuts, Washers, Rivets and Studs**
- Spring Washers**
- Circlips**
- Dowel and Split Pins**
- Wood Screws and Coach Screws**
- Rail Coach Fasteners**
- Miscellaneous Fasteners**
- Eastman Hand Tools**
- Pye Tools**
- Jolly Saws**
- Other Hand Tools**
- General Hardware**
- Eastman power tools**

www.industrialproductsindustry.com